

An aerial, top-down view of a large, circular arena or stage. The arena is illuminated with a mix of blue and yellow lights. A complex network of metal trusses and lighting rigs is visible, with numerous spotlights and fixtures. A dense network of thin, glowing blue lines is overlaid on the entire scene, resembling a digital or data network. The overall atmosphere is futuristic and high-tech.

LEDBLADE

Much more than a LEDSTRIPE

OUR STORY

How it all began, well that's a funny story: The LEDBLADE system was developed by Hungary's leading visual technology service provider Visualpower Ltd. based on 20+ years of professional experience.

Back in early 2014 a sales manager at Visualpower Ltd. held a presentation to his client for their upcoming annual event, where the client was asking of something they hadn't seen before. So, a completely new design was created, full of projection, LED screens all over the place, and here comes the twist, all this was placed in a semi-industrial layer scaffolding system, where every horizontal and vertical part of the structure was "highlighted" by a led stripe integrated with the whole video content.

Our client, the agency was crazy about this idea, and as you can imagine, the end user said: *"OK, this is something new, we'd love to have it, let's do this!"*

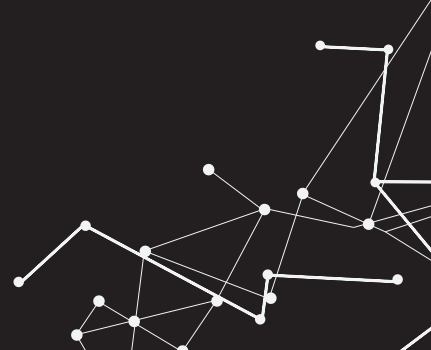
At that point we realised that we had about 6-7 months to get a solution for something that just had been sold. So the whole developing of this new product started, and step by step we reached the desired shape and created the know-how to serve exactly what our client wanted. As a result, this new visual asset become popular rapidly and to fulfill the growing demands LEDBLADE Ltd. was formed. The CE certified mass production of the LEDBLADE system started in 2017 and as of today LEDBLADE is present in 16 countries on 4 continents.



To reach designers easily we are cooperating with the developer team of WYSIWYG.



OUR PRODUCTS



STRAIGHT UNITS

Our flagship is the straight LEDBlade, available in indoor and outdoor versions in the following sizes:

0.5m, 1m, 2m or custom lengths

Available pixel pitches:

10mm, 16mm

Available covers:

Transparent, Black

SETUP OPTIONS:



Slide and turn up to 360°



With doughy clamp



End to end straight



With screw



Parallel matrix



End to end in an angle



HIGH QUALITY TO MEET ANY STANDARDS

OUR SYSTEM ID'S OF THE STRAIGHT UNITS LOOKS LIKE THIS:

e.g. **LB-i0510_50** means

LB- "i -indoor, o -outdoor" "length in meter" "pixel pitch" _ "pixel no"

ITEM ID'S:	10mm indoor	0.5m - Product ID: LB-i0510_50 1m - Product ID: LB-i110_100 2m - Product ID: LB-i210_200
	10mm outdoor	0.5m - Product ID: LB-o0510_50 1m - Product ID: LB-o110_100 2m - Product ID: LB-o210_200
	16mm indoor	0.5m - Product ID: LB-i0516_30 1m - Product ID: LB-i116_60 2m - Product ID: LB-i216_120
	16mm outdoor	0.5m - Product ID: LB-o0516_30 1m - Product ID: LB-o116_60 2m - Product ID: LB-o216_120

CURVED UNITS

FIRST TIME IN HISTORY: PIXEL CONTROLLED CURVED LED STRIPES FOR THE RENTAL MARKET!

After a while, we thought that the straight is not enough, so we came up with the idea of the curved units, so for the very first time in the history of the pixel controlled LED stripes, now the curved is available on the rental market.

The curved blades are also available in indoor and outdoor versions with the following radiuses:

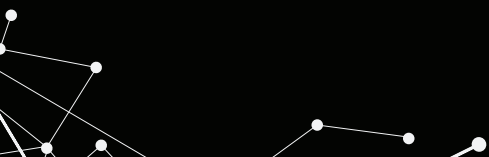
r400mm, r500mm, r1000mm and custom sizes are also available.
Smallest available radius: r400mm.

Available pixel pitches: 10mm, 16mm

Available covers:

Transparent

Black



OUR SYSTEM ID'S OF THE CURVED UNITS LOOK LIKE THIS:

e.g. **LB-iCr400-4-16_50** means

LB- "i -indoor, o -outdoor" "IB -inside bent, OB -outside bent"
"r -radius in mm" "C -curved" "4 or 8 or 16 segment circle" "pixel pitch" _ "pixel no"

ITEM ID'S:	16mm indoor	400mm - Product ID: LB-iCr400-4-16_38 500mm - Product ID: LB-iCr500-4-16_47 600mm - Product ID: LB-iCr600-4-16_57 700mm - Product ID: LB-iCr700-4-16_71 800mm - Product ID: LB-iCr800-4-16_75 900mm - Product ID: LB-iCr900-4-16_85 1000mm - Product ID: LB-iCr1000-4-16_94
	10mm indoor	400mm - Product ID: LB-iCr400-4-10_63 500mm - Product ID: LB-iCr500-4-10_79 600mm - Product ID: LB-iCr600-4-10_94 700mm - Product ID: LB-iCr700-4-10_118 800mm - Product ID: LB-iCr800-4-10_126 900mm - Product ID: LB-iCr900-4-10_141 1000mm - Product ID: LB-iCr1000-4-10_157

POWER SUPPLY

When it comes to power supply, our PSU comes in handy and with its compact size you can setup your system as you really need it.

Technical specification:

AC input: 100-230V
DC output: 24V
Power: 400W
Size: 305*124*56mm
Weight: 2Kg

Available in indoor and outdoor versions (IP54)

PSU ID's:

Indoor version: LB-iPSU24 **Outdoor version:** LB-oPSU24

To meet the safety requirements, a safety point is designed on the bottom of the enclosure.

Safety fixing points

Clamp fixing points



CONTROL DEVICES

ArtNet NODE/DMX triggered
modes available



MASTER CONTROLLER

- Controls up to 8000 pixels
(when linked with a Distributor)
- 1000 pixels / output
- Link via Ethernet to the Controller PC



DISTRIBUTOR

- Expands the number of outputs
- 1000 pixels / output
- Link via MMX to the Master Controller

ID's:

Controller: LB-Cont

Distributor: LB-Dist

CRE:ON HYBRID DRIVE

The CRE:ON Hybrid Drive is our latest development

- Built in power supply
- Switchable SPI / ArtNet modes
- 2.8" touch screen
- Daisy chain power and Ethernet
- 1000 pixels output



ACCESSORIES / GADGETS



Round diffusor - It turns your
BLADEs into pipes



Corner blocks - order as a
sheet metal part or print for
yourself
90, 120, 3x120, 135, 3x135



Layer clamp - just clip
and connect



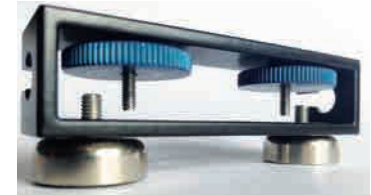
Extra hanging brackets
- give me one more



Cable clips
- organize your cables



Signal booster
- above the limits



Magnets - the fastest
way to connect

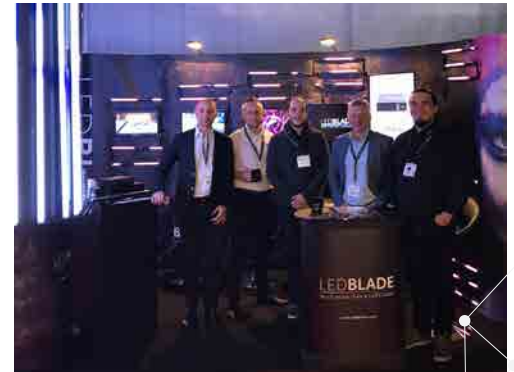
LEDBLADE AT ISE



Our first ISE event in 2016.



We've been nominated for Stand Design Awards at ISE 2017.



Our CRE:ON Hybrid drive was displayed the first time at ISE 2018.

LEDBLADE

Much more than a LEDSTRIPE

LEDBLADE Ltd.

H-1115 Budapest, Kelenföldi út 2.

Phone: +36 1 203 2020

E-mail: info@ledblade.com

FOLLOW US ON SOCIAL MEDIA!



www.ledblade.com